

FY09 ICD-9-CM Procedure Code Updates

Audio Seminar/Webinar
September 18, 2008

Practical Tools for Seminar Learning

Disclaimer

The American Health Information Management Association makes no representation or guarantee with respect to the contents herein and specifically disclaims any implied guarantee of suitability for any specific purpose. AHIMA has no liability or responsibility to any person or entity with respect to any loss or damage caused by the use of this audio seminar, including but not limited to any loss of revenue, interruption of service, loss of business, or indirect damages resulting from the use of this program. AHIMA makes no guarantee that the use of this program will prevent differences of opinion or disputes with Medicare or other third party payers as to the amount that will be paid to providers of service.

As a provider of continuing education the American Health Information Management Association (AHIMA) must assure balance, independence, objectivity and scientific rigor in all of its endeavors. AHIMA is solely responsible for control of program objectives and content and the selection of presenters. All speakers and planning committee members are expected to disclose to the audience: (1) any significant financial interest or other relationships with the manufacturer(s) or provider(s) of any commercial product(s) or services(s) discussed in an educational presentation; (2) any significant financial interest or other relationship with any companies providing commercial support for the activity; and (3) if the presentation will include discussion of investigational or unlabeled uses of a product. The intent of this requirement is not to prevent a speaker with commercial affiliations from presenting, but rather to provide the participants with information from which they may make their own judgments.

Faculty

Susan Gatehouse, RHIT, CCS, CPC

Susan Gatehouse is president of Gatehouse Consulting, Inc., specializing in coding and billing practices for inpatient, outpatient, and physician services. Ms. Gatehouse has over 15 years of experience in HIM. She has developed and implemented coder training programs for inpatient, outpatient, and E&M services for a wide range of healthcare facilities.

Kim Urbanowicz, RHIA, MBA, CPC

Kim Urbanowicz has over 20 years of experience in HIM and is president of Willowcrest, Inc., a healthcare management services company serving clients nationally in the areas of interim health information department management, physician practice coding and reimbursement, operational improvement initiatives, and ICD-9-CM and CPT® coding training programs.

Table of Contents

Disclaimer	i
Faculty	ii
New Procedure Codes for FY 2009	
Code 00.49	1-2
Code 00.58	3
Aortic Aneurysms	3
Endovascular Aneurysm Repair	4
Intra-Aneurysm Sac Pressure Monitoring	4
Intravascular Pressure Measurement – Codes 00.59 – 00.69	5
Coronary Arteries	6
Intrathoracic Arteries	6
Peripheral Arteries	7
Other Specified and Unspecified Vessels	7
Laparoscopic Repairs of Inguinal Hernia	8
Codes 17.11 – 17.13	8
Codes 17.21 – 17.24	9
Laparoscopic Large Intestines.....	9
Codes 17.31 – 17.39	10
Codes 17.41 – 17.49.....	11
Robotic Assisted Procedures	11
Description of Technology	11
Areas using Robotic Assisted Surgery	12
Robotic Assisted Procedures	12
Code Descriptions for 17.41 – 17.49.....	13
Endoscopic Pulmonary Airway Flow Measurement	13
Excision or Destruction of left Atrial Appendage (LAA)	14
Code 37.36	14
Removal of Internal Biventricular Heart Replacement	15
Code 37.55	15
Implantation or Insertion of Biventricular External Heart Assist System	16
Code 37.60	16
Intravascular Spectroscopy	17
Code 38.23	17
Intra-Abdominal Colectomy	18
Codes 45.81 – 45.83	18
Pull-through resection of rectum	18
Codes 48.40 – 48.49	19
Abdominoperineal resection of rectum.....	19
Codes 48.50 – 48.59	20
Laparoscopic Repair of Umbilical Hernia	20
Codes 53.42 & 53.43	20
Laparoscopic incisional hernia repair	21
Codes 53.62 & 53.63	21

(CONTINUED)

Table of Contents

Diaphragmatic hernia repair	21
Codes 53.71 – 53.75	21-22
Codes 53.83 & 53.84	22
Anulus Fibrosus Repair	23-24
Code 80.53	24
Code 80.54	25
Total Reconstruction of the Breast	25
Total Breast Reconstruction Chart	26
Breast Reconstruction	26
Breast Reconstruction Chart	27
Codes 85.70 – 85.72	27
Codes 85.73 – 85.76	28
Code 85.79	28
Revised Procedure Codes FY 2009	
Replacement Heart System	29
Revised code 37.52 – 37.54	30
Revised code 37.62 & 37.64	31
Revised code 37.65	32
Revised Open & Other Procedures	32
Revised codes 45.71 – 45.75	33
Revised codes 45.76 & 45.79	33
Revised codes 53.01 – 53.04	34
Revised codes 53.11 – 53.16	35
Revised codes 53.41 & 53.49	36
Revised codes 53.61 & 53.69	36
Revised Codes 81.65 & 81.66	37
Technique Snapshot	37
Revised codes 81.65 & 81.66	38
Revised code 84.56	38
Revised code 93.90	39-42
Revised codes 96.70 – 96.72	42
Resource/Reference List	43
Audience Questions	44
Audio Seminar Discussion and Audio Seminar Information Online	44-45
Upcoming Audio Seminars	45
Thank You/Evaluation Form and CE Certificate (Web Address)	46
Appendix	47
Resource/Reference List	48
CE Certificate Instructions	

New Procedure Codes for FY 2009

1

Code 00.49

♦ **Super Saturated Oxygen Therapy**

- **Used to restore coronary blood flow in AMI patients.**
 - **Current treatment options available to restore coronary artery blood flow in AMI patients include:**
 - **Pharmacologic (fibrinolytic therapy)**
 - **Percutaneous Coronary Intervention**
 - **Surgical Intervention (CABG).**

All of these therapies intend to restore blood flow by targeting the coronary artery thrombosis that is the direct cause of the AMI.

2

Code 00.49

◆ **Super Saturated Oxygen Therapy**

- Also call AO therapy
- Automated system that withdraws arterial blood from the patient and mixes it with a small amount of saline, supersaturated oxygen.
- It is delivered using the same guide components that are already in place for arterial access. The blood is delivered directly to the stented coronary artery via an infusion catheter.

3

Code 00.49

New Code 00.49 SuperSaturated oxygen therapy
 Aqueous oxygen (AO) therapy
 SSO₂
 SuperOxygenation infusion therapy

Code also any: injection or infusion of thrombolytic agent (99.10)
 insertion of coronary artery stent(s) (36.06-36.07)
 intracoronary artery thrombolytic infusion (36.04)
 number of vascular stents inserted (00.45-00.48)
 number of vessels treated (00.40-00.43)
 open chest coronary artery angioplasty (36.03)
 other removal of coronary obstruction (36.09)
 percutaneous transluminal coronary angioplasty [PTCA] (00.66)
 procedure on vessel bifurcation (00.44)
 Excludes: other oxygen enrichment (93.96)
 other perfusion (39.97)

4

Code 00.58

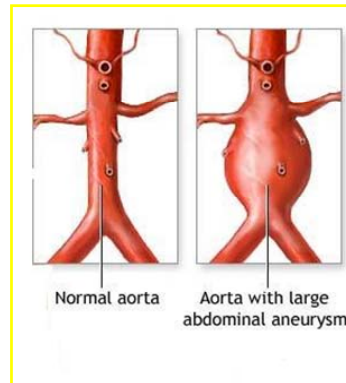
- ◆ Insertion of intra-aneurysm sac pressure monitoring device (intraoperatively)

5

Aortic Aneurysms

Occurs when a weak area of the aorta expands or bulges

- Abdominal Aortic Aneurysm(AAA)
- Thoracic Aortic Aneurysm (TAA)



6

Endovascular Aneurysm Repair

Endovascular aneurysm repair includes placement of a graft inside the aneurysmal vessel without surgically opening the diseased vessel.

The potential complication of this procedure is a leak around the graft into the aneurysm sac (endoleak). Imaging is used to detect this complication.

Insertion of intra-aneurysm sac pressure monitoring device is an additional means to monitor intraoperatively.



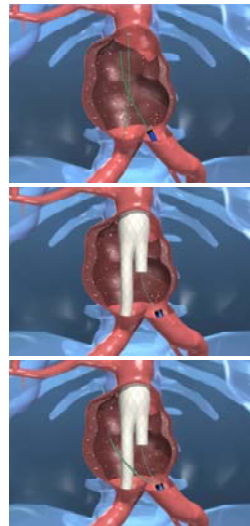
7

Code 00.58

Intra-Aneurysm Sac Pressure Monitoring has two components:

- wireless implantable sensor
- external electronic module

The external electronics module wirelessly communicates with the sensor to deliver sac pressure.



8

Codes 00.59 – 00.69**♦ Intravascular Pressure Measurement**

- **Coronary Arteries**
- **Intrathoracic Arteries**
- **Peripheral Arteries**
- **Other Specified and Unspecified Vessels**

9

Codes 00.59-00.69**♦ Intravascular Pressure Measurement**

- **Provides a functional physiological assessment regarding vascular pressure.**
 - Comparable to IVUS. Both services are invasive and utilize guide wires and catheters.
 - Procedure is used for clinical decision making and evaluation of interventional outcomes.
 - Fraction Flow Reserve (FFR) is included in codes 00.59 for coronary artery monitoring.

10

Code 00.59

- ◆ **00.59 Intravascular pressure measurement of coronary arteries**

Includes: fractional flow reserve (FFR)

Code also any synchronous diagnostic or therapeutic procedures

Excludes: intravascular pressure measurement of intrathoracic arteries (00.67)

11

Code 00.67

- ◆ **00.67 Intravascular pressure measurement of intrathoracic arteries**

- **Assessment of:**
 - aorta and aortic arch
 - carotid

Code also any synchronous diagnostic or therapeutic procedures

12

Code 00.68

- ◆ **00.68 Intravascular pressure measurement of peripheral arteries**
 - **Assessment of:**
 - other peripheral vessels
 - vessels of arm(s)
 - vessels of leg(s)

Code also any synchronous diagnostic or therapeutic procedures

13

Code 00.69

- ◆ **00.69 Intravascular pressure measurement, other specified and unspecified vessels**
 - **Assessment of:**
 - iliac vessels
 - intra-abdominal vessels
 - mesenteric vessels
 - renal vessels

Code also any synchronous diagnostic or therapeutic procedures

Excludes: intravascular pressure measurement of:
coronary arteries (00.59)
intrathoracic arteries (00.67)
peripheral arteries (00.68)

14

Codes 17.11 – 17.24

♦ **Laparoscopic Repairs of Inguinal Hernia**

- **Codes are differentiated by:**
 - Direct
 - Indirect
 - Unilateral
 - Bilateral

15

Other Misc. Procedures
Codes 17.11 – 17.13

New subcategory

17.1 Laparoscopic unilateral repair of inguinal hernia 

Excludes: other and open unilateral repair of hernia (53.00 - 53.05)

New code 17.11 Laparoscopic repair of direct inguinal hernia with graft or prosthesis

Laparoscopic repair of direct and indirect inguinal hernia with graft or prosthesis

New code 17.12 Laparoscopic repair of indirect inguinal hernia with graft or prosthesis

New code 17.13 Laparoscopic repair of inguinal hernia with graft or prosthesis, not otherwise specified

16

Other Misc. Procedures
Codes 17.21 – 17.24

New subcategory

17.2 Laparoscopic bilateral repair of inguinal hernia 

Excludes: other and open bilateral repair of hernia (53.10 - 53.17)

New code 17.21 Laparoscopic bilateral repair of direct inguinal hernia with graft or prosthesis

New code 17.22 Laparoscopic bilateral repair of indirect inguinal hernia with graft or prosthesis

New code 17.23 Laparoscopic bilateral repair of inguinal hernia, one direct and one indirect, with graft or prosthesis

New code 17.24 Laparoscopic bilateral repair of inguinal hernia with graft or prosthesis, not otherwise specified

17

Codes 17.31 – 17.39

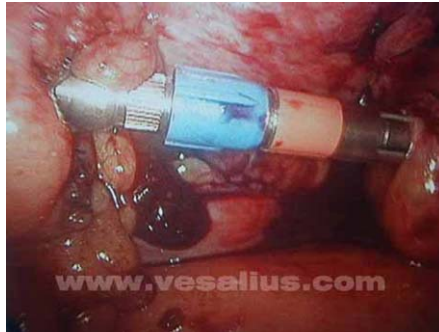
♦ Laparoscopic Large Intestines

• Codes are differentiated by:

- Multiple segmental resection
- Partial Resection
- Location of resection
 - Cecum
 - Right Hemicolectomy
 - Transverse Colon
 - Left Hemicolectomy
 - Sigmoidectomy

18

Codes 17.31 – 17.39



Ethicon Endo-Surgery, Inc.
Johnson & Johnson Company

19

Laparoscopic Codes 17.31 – 17.39

- 17.3 Laparoscopic partial excision of large intestine**
Excludes: other and open partial excision of large intestine (45.71-45.79)
- 17.31 Laparoscopic multiple segmental resection of large intestine**
- 17.32 Laparoscopic cecectomy**
- 17.33 Laparoscopic right hemicolectomy**
- 17.34 Laparoscopic resection of transverse colon**
- 17.35 Laparoscopic left hemicolectomy**
- 17.36 Laparoscopic sigmoidectomy**
- 17.39 Other laparoscopic partial excision of large intestine**

20

Codes 17.41 – 17.49

- ♦ **Robotic Assisted Procedures**
 - Latest development in minimally invasive surgery (MIS). Robotic surgical systems give surgeons the flexibility of traditional open surgery while operating through tiny incisions.
 - The first system FDA approved is the *da Vinci* Surgical System.

21

Codes 17.41 – 17.49

- ♦ **Description of Technology:**
 - Ergonomic surgeon's viewing and control console
 - Patient side cart with four interactive robotic arms
 - High performance 3-D high-definition vision system
 - EndoWrist instruments

22

Codes 17.41 – 17.49

- ◆ **Areas using Robotic Assisted Surgery**
 - Urology (cystectomy, radical prostatectomy)
 - Gynecology (hysterectomy)
 - General Surgery (cholecystectomy)
 - Cardiothoracic (cardiac ablation)

23

Codes 17.41 – 17.49

- ◆ **Robotic Assisted Procedures**
 - **Codes are differentiated by:**
 - Open
 - Laparoscopic
 - Percutaneous
 - Endoscopic
 - Thoracoscopic
 - Other and Unspecified

24

Codes 17.41 – 17.49

- 17.41 Open robotic assisted procedure
Robotic assistance in open procedure
- 17.42 Laparoscopic robotic assisted procedure
Robotic assistance in laparoscopic procedure
- 17.43 Percutaneous robotic assisted procedure
Robotic assistance in percutaneous procedure
- 17.44 Endoscopic robotic assisted procedure
Robotic assistance in endoscopic procedure
- 17.45 Thoracoscopic robotic assisted procedure
Robotic assistance in thoracoscopic procedure
- 17.49 Other and unspecified robotic assisted procedure
Robotic assistance in other and unspecified procedure

25

Code 33.72

- ♦ **Endoscopic Pulmonary Airway Flow Measurement**
 - Means of measuring intrapulmonary airflow using intrapulmonary balloon catheters inserted into diseased portions of the lung during bronchoscopy.
 - Code also any diagnostic or therapeutic procedure if performed.

26

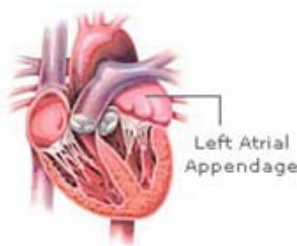
Code 37.36

- ◆ **Excision or Destruction of Left Atrial Appendage (LAA)**
- ◆ **Patient's with atrial fibrillation may be a candidate for the surgery if they:**
 - Have persistent AF symptoms despite drug compliance
 - Have documented drug resistance
 - Are intolerant of, or contraindicated for chronic anti-arrhythmic drug therapy
 - Are intolerant of, or contraindicated for chronic oral anticoagulation therapy.

27

Code 37.36

To surgically close (exclude) the LAA, the surgeon can use either a surgical staple, clip, or can oversew with sutures. The staple and clip devices are non absorbable permanent implants.



28

Code 37.55

◆ Removal of Internal Biventricular Heart Replacement

- This is not a ventricular assist device (VAD) because when the device is implanted there is very little of the native heart left for the device to assist.
- Composed on an implantable artificial ventricles and valves. The device is sewn to the patient's remaining atria (the top half of the heart).

29

Code 37.55

37.55 Removal of internal biventricular heart replacement system

Explantation of artificial heart

**Code also any concomitant procedure, such as:
combined heart-lung transplantation (33.6)**



heart transplantation (37.51)

implantation of internal biventricular heart replacement system (37.52)

**Excludes: explantation [removal] of external heart assist system (37.64)
explantation [removal] of percutaneous external heart assist device (97.44)
nonoperative removal of heart assist system (97.44)
that with replacement or repair of heart replacement system (37.53, 37.54)**

30

Code 37.60

◆ Implantation or Insertion of Biventricular External Heart Assist System

- Provides temporary support for both sides of the native heart.
- The device is outside the body but connected to the heart.

31

Code 37.60

37.60 Implantation or insertion of biventricular external heart assist system

Temporary cardiac support for both left and right ventricles, inserted in the same operative episode

Includes: open chest (sternotomy) procedure for cannulae attachments

Note: Device (outside the body but connected to heart) with external circulation pump. Ventriculotomy is included; do not code separately.

Excludes: implantation of internal biventricular heart replacement system (artificial heart) (37.52)
 implant of pulsation balloon (37.61)
 insertion of percutaneous external heart assist device (37.68)
 insertion of temporary non-implantable extracorporeal circulatory assist device (37.62)

32

Code 38.23

◆ Intravascular Spectroscopy

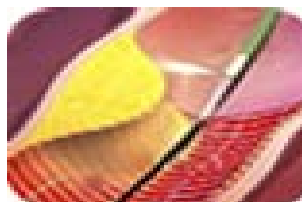
- Used to characterize the composition of coronary plaques in patients undergoing catheterization or stent placement.
- The detection of lipid rich plaques can assist in determining whether it is appropriate for drug eluting stent(s) to be implanted rather than bare metal.

33

Code 38.23

The procedure consists of the following:

- Consist of a laser light source
- Automated pullback rotation device
- Small fiberoptic catheter



34

Codes 45.81 – 45.83

Total intra-abdominal colectomy

New codes differentiate between open and laparoscopic approaches:

New code 45.81 Laparoscopic total intra-abdominal colectomy

New code 45.82 Open total intra-abdominal colectomy

New code 45.83 Other and unspecified total intra-abdominal colectomy

35

Pull-through resection of rectum

- ◆ **Performed by dividing and removing the rectum at the level of the sphincter muscles.**
 - **Distal colon is then pulled through the sphincter complex and approximated to the anus by sutures**
 - **Approaches:**
 - Laparoscopic
 - Open
 - Other

36

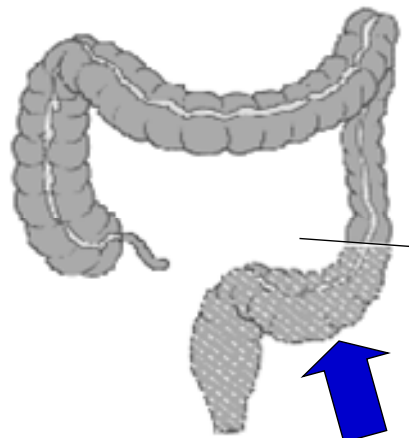
Codes 48.40 – 48.49

New code 48.40	Pull-through resection of rectum, not otherwise specified Pull-through resection NOS Excludes: abdominoperineal pull-through NOS (48.50)
New code 48.42	Laparoscopic pull-through resection of rectum
New code 48.43	Open pull-through resection of rectum
48.49	Other pull-through resection of rectum
Add exclusion term	Excludes: <u>laparoscopic pull-through resection of rectum (48.42)</u> <u>open pull-through resection of rectum (48.43)</u> <u>pull-through resection of rectum, not otherwise specified (48.40)</u>

37

Abdominoperineal resection of rectum

- ◆ Anus, rectum, sigmoid colon are removed
 - Stoma, or opening, is made between the large intestine and the skin



Area removed

38

Codes 48.50 – 48-59

- New code 48.50** Abdominoperineal resection of the rectum, not otherwise specified
- New code 48.51** Laparoscopic abdominoperineal resection of the rectum
- New code 48.52** Open abdominoperineal resection of the rectum
- New code 48.59** Other abdominoperineal resection of the rectum
 Excludes: abdominoperineal resection of the rectum, NOS (48.50)
 laparoscopic abdominoperineal resection of the rectum (48.51)
 open abdominoperineal resection of the rectum (48.52)

39

Codes 53.42 & 53.43

Laparoscopic Repair of Umbilical Hernia

- New code 53.42** Laparoscopic repair of umbilical hernia with graft or prosthesis
- New code 53.43** Other laparoscopic umbilical herniorrhaphy

40

Codes 53.62 & 53.63**Laparoscopic incisional hernia repair**

- Acquired defect of anterior abdominal wall

New code 53.62 Laparoscopic incisional hernia repair with graft or prosthesis

New code 53.63 Other laparoscopic repair of other hernia of anterior abdominal wall with graft or prosthesis

41

Codes 53.71 – 53.75**♦ Diaphragmatic hernia repair**

- A diaphragmatic hernia is an abnormal opening in the diaphragm, occurring before birth, that allows part of the abdominal organs to migrate into the chest cavity.
- Codes separated into 2 approaches:
 - Abdominal
 - Thoracic

42

Codes 53.71 – 53.75

New subcategory 53.7

Repair of diaphragmatic hernia, abdominal approach

New code 53.71 Laparoscopic repair of diaphragmatic hernia, abdominal approach

New code 53.72 Other and open repair of diaphragmatic hernia, abdominal approach

New code 53.75 Repair of diaphragmatic hernia, abdominal approach, not otherwise specified
 Excludes: laparoscopic repair of diaphragmatic hernia (53.71)
 other and open repair of diaphragmatic hernia (53.72)

43

Codes 53.83 & 53.84

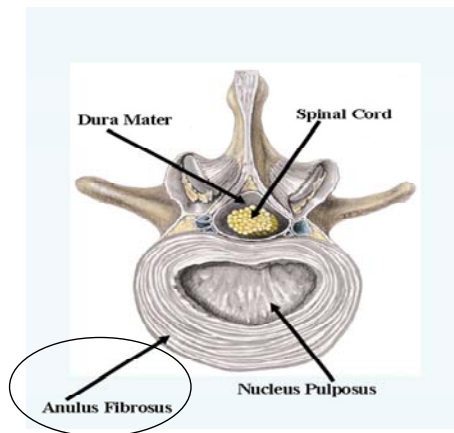
New code 53.83 Laparoscopic repair of diaphragmatic hernia, with thoracic approach

New code 53.84 Other and open repair of diaphragmatic hernia, with thoracic approach
 Excludes: repair of diaphragmatic hernia with thoracic approach, NOS (53.80)

44

Anulus Fibrosus Repair

- ◆ Following a surgical diskectomy, an open hole is left in the anulus fibrosus of the disk.



45

Anulus Fibrosus Repair

- ◆ Not repairing this defect may contribute to:
 - Recurrent disc herniation
 - Higher rate of reoperation
 - Poor patient outcomes

46

Anulus Fibrosus Repair

- ◆ **Types of Repair Include:**
 - **Microsurgical suture**
 - Autograft may be used
 - **Soft tissue re-approximation**
 - XClose™ Tissue Repair System
 - **Surgical mesh**
 - InClose™ Surgical Mesh System

47

Code 80.53

New code 80.53 Repair of the anulus fibrosus with graft or prosthesis
 Anular disc repair
 Closure (sealing) of the anulus fibrosus defect

Includes:
 microsurgical suture repair with fascial autograft
 soft tissue re-approximation repair with tension bands
 surgical mesh repair

Code also any: application or administration of adhesion barrier substance, if performed (99.77)
 intervertebral discectomy, if performed (80.51)
 locally harvested fascia for graft (83.43)

48

Code 80.54

New code 80.54 Other and unspecified repair of the anulus fibrosus

- Anular disc repair
- Closure (sealing) of the anulus fibrosus defect
- Microsurgical suture repair without fascial autograft
- Percutaneous repair of the anulus fibrosus

Code also any: application or administration of adhesion barrier substance, if performed (99.77)
 intervertebral discectomy, if performed (80.51)

49

Total Reconstruction of the Breast

Current code, 85.7 Total Reconstruction of Breast, is not sufficient for evolving complexity of procedures

50

Total Breast Reconstruction

	Pedicle Latissimus flap	Pedicle TRAM flap	Free TRAM flap	DIEP flap	SIEA flap	GAP flap
Historical development	1970s	1980s	Early 1990s	Mid 1990s	Late 1990s	Late 1990s
Donor location	Back	Abdomen	Abdomen	Abdomen	Abdomen	Gluteal
Tissues used	Muscle, fat, skin	Muscle, fat, skin	Muscle, fat, skin	Fat, skin	Fat, skin	Fat, skin
Surgical technique	Remains attached	Remains attached	Dissected free, Microvascular anastomosis	Dissected free, Microvascular dissection, Microvascular anastomosis	Dissected free, Microvascular anastomosis	Dissected free, Microvascular dissection, Microvascular anastomosis
Implant	Sometimes	None	None	None	None	None

51

Breast Reconstruction

- ◆ **7 Main Categories of Reconstruction Techniques:**
 - **Implant**
 - **Latissimus flap**
 - **Pedicle transverse rectus abdominis musculocutaneous (TRAM) flap**
 - **Free TRAM flap**
 - **Deep inferior epigastric perforator (DIEP) flap**
 - **Superficial inferior epigastric artery (SIEA) flap**
 - **Gluteal artery perforator (GAP) flap**

52

Breast Reconstruction

	Pedicle Latissimus flap	Pedicle TRAM flap	Free TRAM flap	DIEP flap	SIEA flap	GAP flap
Specific factors:						
- OR time (hours)	3.6 *	4.1*-4.8 ⁽²¹⁾	6.5*-11 ^(21, 34)	5.8-11 ⁽³⁶⁻³⁸⁾	8.6-9.0 ^(38, 40)	5.3-12* ⁽⁴²⁾
- Days in ICU	0 *	0.1 *	1.8 *	1.1 *	1.3 *	1.2 *
- Length of stay (days)	7.1 ⁽³³⁾	4.7-5.8 ^(21, 22)	5.1-7.7 ^(21, 31, 34)	4.7-8.5 ^(32, 33, 38)	4.2-9.3 ^(38, 40)	4.2 ⁽⁴²⁾
- Total flap loss (%)	1.0 ⁽¹³⁾	0-1.1 ^(20, 24)	0.9-4.9 ^(20, 21)	0.5-5.9 ^(28, 31)	0-7.1 ^(40, 41)	3 ⁽⁴²⁾
- Total complication rate (%)	48-81 ^(13, 15, 16)	25-41 ⁽²⁰⁻²²⁾	38-54 ^(20, 30)	30 ⁽²⁸⁾	27-32 ^(40, 41)	22 ⁽⁴²⁾
- Good cosmetic appearance (%)	69-85 ^(13, 15)	67-83 ^(20, 25)	65-70 ^(20, 25)	93 ⁽⁴³⁾	100 ⁽⁴⁴⁾	...
- High patient satisfaction (%)	87 ⁽¹³⁾	76-79 ^(20, 25)	78-80 ^(20, 25)	93 ⁽⁴³⁾	100 ⁽⁴⁴⁾	...
Current ICD-9-CM code	85.85	85.7	85.7	85.7	85.7	85.7

* Based on Beth Israel Deaconess Medical Center's experience with unilateral breast reconstruction

53

Codes 85.70 – 85.72

New subcategory 85.7 Total reconstruction of breast

**New code 85.70 Total reconstruction of breast, not otherwise specified
Perforator flap, free**

New code 85.71 Latissimus dorsi myocutaneous flap

New code 85.72 Transverse rectus abdominis myocutaneous (TRAM) flap, pedicle

Excludes: transverse rectus abdominis myocutaneous (TRAM) flap, free (85.73)

54

Codes 85.73 – 85.76

- New code 85.73** Transverse rectus abdominis myocutaneous (TRAM) flap, free
 Excludes: Transverse rectus abdominis myocutaneous (TRAM) flap, pedicled (85.72)
- New code 85.74** Deep inferior epigastric artery perforator (DIEP) flap, free
- New code 85.75** Superficial inferior epigastric artery (SIEA) flap, free
- New code 85.76** Gluteal artery perforator (GAP) flap, free

55

Code 85.79

- New code 85.79** Other total reconstruction of breast
 Excludes: deep inferior epigastric artery perforator (DIEP) flap, free (85.74)
 gluteal artery perforator flap, free (85.76)
 latissimus dorsi myocutaneous flap (85.71)
 perforator flap, free (85.70)
 superficial inferior epigastric artery (SIEA) flap, free (85.75)
 total reconstruction of breast, not otherwise specified (85.70)
 transverse rectus abdominis myocutaneous (TRAM) flap, free (85.73)
 transverse rectus abdominis myocutaneous (TRAM) flap, pedicled (85.72)

56

**Revised Procedure Codes
FY 2009**

57

Revised codes 37.52 – 37.54

- ♦ **Replacement Heart System**
 - **Current code series updated to specify the following:**
 - Total heart system
 - Internal biventricular device

58

Revised code 37.52

Revise code title 37.52	Implantation of total <u>internal biventricular heart</u> replacement heart system
Delete inclusion term	Implantation of fully implantable total replacement heart system, including ventriculectomy
Revise exclusion term	Excludes: implantation of heart assist system[VAD] (37.62, 37.65, 37.66, <u>37.68</u>)

59

Revised codes 37.53 & 37.54

Revise code title 37.53	Replacement or repair of thoracic unit of (<u>total</u>) replacement heart system
Revise code title 37.54	Replacement or repair of other implantable component of (<u>total</u>) replacement heart system
Revise exclusion term	Excludes: replacement or repair of thoracic unit of (<u>total</u>) replacement heart system (37.53)

60

Revised code 37.62

Revise code title 37.62	Insertion of <u>temporary non-implantable extracorporeal heart circulatory assist system device</u>
Add inclusion term	<u>Acute circulatory support device</u>
Add inclusion term	<u>Short-term circulatory support (up to six hours)</u>
	Excludes:
Revise exclusion term	implantation of total <u>internal biventricular heart replacement heart system [artificial heart] (37.52)</u>
Add exclusion term	<u>implant of external heart assist system (37.65)</u>
Add exclusion term	<u>insertion of implantable extracorporeal heart assist system (37.66)</u>
Add exclusion term	<u>removal of heart assist system (37.64)</u>
Add note	<u>Note: Includes explanation of this device; do not code separately.</u> 61

Revised code 37.64

Revise code title 37.64	Removal of <u>external heart assist system(s) or device(s)</u>
Add inclusion term	<u>Explantation of external device(s) providing left and right ventricular support</u>
Add inclusion term	<u>Explantation of single external device and cannulae</u>
Add exclusion term	Excludes: <u>temporary non-implantable extracorporeal circulatory assist device (37.62)</u>

62

Revised code 37.65

Revise code title 37.65	<u>Implant of single ventricular (extracorporeal) external heart assist system</u>
Add inclusion term	<u>Insertion of one device into one ventricle</u>
Revise exclusion term	Excludes: implantation of total <u>internal biventricular heart replacement heart system (37.52)</u>
Add exclusion term	<u>insertion of implantable heart assist system (37.66)</u>
Add exclusion term	<u>insertion or implantation of two external VADs for simultaneous right and left heart support (37.60)</u>
Add exclusion term	<u>that without sternotomy (37.62)</u>
Add note	<u>Note: Insertion or implantation of one external VAD for left or right heart support.</u>

63

Revised Open & Other Procedures

With the new laparoscopic codes created, the existing codes needed to be modified to capture open and other types of approaches

64

Revised codes 45.71 – 45.75

Revise subcategory title 45.7	<u>Open and other p</u> Partial excision of large intestine
Add exclusion term	<u>Excludes: laparoscopic partial excision of large intestine (17.31 – 17.39)</u>
Revise code title 45.71	<u>Open and other m</u> Multiple segmental resection of large intestine
Revise code title 45.72	<u>Open and other c</u> Cecectomy
Revise code title 45.73	<u>Open and other r</u> Right hemicolectomy
Revise code title 45.74	<u>Open and other r</u> Resection of transverse colon
Revise code title 45.75	<u>Open and other l</u> Left hemicolectomy

65

Revised codes 45.76 & 45.79

Revise code title 45.76	<u>Open and other s</u> Sigmoidectomy
Revise code title 45.79	<u>Other and unspecified</u> partial excision of large intestine

66

Revised codes 53.01 & 53.02

Revise subcategory title 53.0	<u>Other unilateral repair of inguinal hernia</u>
Add exclusion term	<u>Excludes: laparoscopic unilateral repair of inguinal hernia (17.11-17.13)</u>
Revise code title 53.01	<u>Other and open repair of direct inguinal hernia</u>
Add inclusion term	<u>Direct and indirect inguinal hernia</u>
Revise code title 53.02	<u>Other and open repair of indirect inguinal hernia</u>

67

Revised codes 53.03 & 53.04

Revise code title 53.03	<u>Other and open repair of direct inguinal hernia with graft or prosthesis</u>
Revise code title 53.04	<u>Other and open repair of indirect inguinal hernia with graft or prosthesis</u>

68

Revised codes 53.11 – 53.13

Revise subcategory title 53.1	<u>Other b</u> Bilateral repair of inguinal hernia
Add exclusion term	<u>Excludes: laparoscopic bilateral repair of inguinal hernia (17.21 – 17.24)</u>
Revise code title 53.11	<u>Other and open b</u> Bilateral repair of direct inguinal hernia
Revise code title 53.12	<u>Other and open b</u> Bilateral repair of indirect inguinal hernia
Revise code title 53.13	<u>Other and open b</u> Bilateral repair of inguinal hernia, one direct and one indirect

69

Revised codes 53.14 – 53.16

Revise code title 53.14	<u>Other and open b</u> Bilateral repair of direct inguinal hernia with graft or prosthesis
Revise code title 53.15	<u>Other and open b</u> Bilateral repair of indirect inguinal hernia with graft or prosthesis
Revise code title 53.16	<u>Other and open b</u> Bilateral repair of inguinal hernia, one direct and one indirect, with graft or prosthesis

70

Revised codes 53.41 & 53.49

- Revise code title **53.41** Other and open rRepair of umbilical hernia with graft or prosthesis
- Revise code title **53.49** Other open umbilical herniorrhaphy
Excludes: other laparoscopic umbilical herniorrhaphy (53.43) repair of umbilical hernia with graft or prosthesis (53.41, 53.42)

71

Revised codes 53.61 & 53.69

- Revise code title **53.61** Other open incisional hernia repair with graft or prosthesis
- Add exclusion term Excludes: laparoscopic incisional hernia repair with graft or prosthesis (53.62)
- Revise code title **53.69** Other and open rRepair of other hernia of anterior abdominal wall with graft or prosthesis
- Add exclusion term Excludes: other laparoscopic repair of other hernia of anterior abdominal wall with graft or prosthesis (53.63)

72

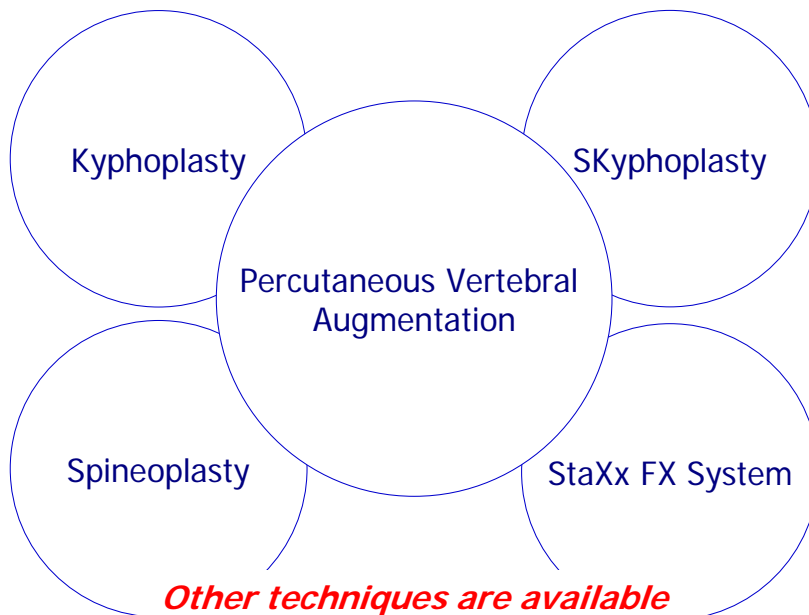
Revised codes 81.65 & 81.66

♦ Vertebroplasty vs. Vertebral Augmentation

- Vertebroplasty is a single step procedure with the injection of bone cement to stabilize the vertebrae.
- Vertebral Augmentation is a two step procedure using cement and inflatable balloon.

73

Technique Snapshot



74

Revised Codes 81.65 & 81.66

Revise code title 81.65	<u>Percutaneous v</u> Vertebroplasty
Add exclusion term	Excludes: <u>percutaneous vertebral augmentation (81.66)</u>
Revise code title 81.66	Kyphoplasty <u>Percutaneous vertebral augmentation</u>
Revise inclusion term	Insertion of inflatable balloon, bone tamp, or other device <u>displacing (removing) (compacting) bone to create a space (cavity) (void) for partial restoration of height of diseased or fractured vertebral body</u> prior to <u>the</u> injection of bone void filler (cement) (polymethylmethacrylate) (PMMA) <u>or other substance</u>
Add inclusion term	<u>Arcuplasty</u>
Add inclusion term	<u>Kyphoplasty</u>
Add inclusion term	<u>SKyphoplasty</u>
Add inclusion term	<u>Spineoplasty</u>

75

Revised code 84.56

♦ **Insertion or replacement of (cement) spacer.**

– The term replacement has been added.

76

Revised Code 93.90

♦ Non-invasive mechanical ventilation

- In recent years respiratory treatment modalities have changed CPAP is a form of NIPPV and should have its own code.
- The terms CPAP, BiPAP, PEEP and PPV can have different meanings to physicians and pulmonologist. Therefore creating a inconsistency in physician documentation and code assignment.

77

Revised Code 93.90

CPAP – continuous positive airway pressure:

Machine delivers a constant elevated airway pressure to the patient. This pressure is the same during inspiration and expiration and thus no breathing (ventilatory) assistance is provided. CPAP is used to stabilize airway structures in obstructive sleep apnea and stabilize alveolar structures in conditions such as pulmonary edema. CPAP is most commonly delivered by a facemask but can be provided through an endotracheal tube or tracheostomy.

78

Revised Code 93.90

PPV – positive pressure ventilation:

Machine delivers a higher pressure during inspiration than during expiration to the patient. PPV thus provides breathing (ventilatory) assistance. PPV is used to provide breathing (ventilatory) assistance for patients with acute respiratory failure through either a facemask (non-invasive PPV or NPPV) or an endotracheal tube or a tracheostomy (invasive). NPPV is also sometimes used during sleep to provide breathing (ventilatory) assistance to patients with sleep apnea or chronic CO₂ retention. PPV (and NPPV) can be provided with a variety of different pressure and flow configurations as well as with or without backup machine breaths (e.g. assist control (ACV), volume assist control (VACV), pressure assist control (PACV), pressure support (PSV), airway pressure release ventilation (APRV), and synchronized intermittent mandatory ventilation.

79

Revised Code 93.90

PEEP – positive end expiratory pressure:

Machine delivers an elevated pressure during expiration to maintain stability of alveolar structures as the lung empties. PEEP is often used in conjunction with the higher inspiratory pressures and breathing (ventilatory) assistance of PPV. PEEP technically is part of CPAP except that with CPAP the elevated expiratory pressures are equal to the inspiratory pressures and thus, as described above, no breathing (ventilatory) assistance is supplied. A common mistake is to refer to “CPAP with pressure support” – what this really means is pressure support ventilation with PEEP.

80

Revised Code 93.90

◆ Coding Issue:

- Positive pressure ventilation can be delivered invasively or non-invasively. Terms associated with PPV may include: assist control volume (ACV), adaptive support ventilation, airway pressure release ventilation (APRV), pressure assist control ventilation.
- The differentiating factor continues to be based on whether or not the patient receives invasive or non-invasive positive pressure ventilation.

81

Revised Code 93.90

Revise code title 93.90	Continuous positive airway pressure [CPAP] <u>Non-invasive mechanical ventilation</u>
Add inclusion term	<u>BiPAP without (delivery through) endotracheal tube or tracheostomy</u>
Add inclusion term	<u>CPAP without (delivery through) endotracheal tube or tracheostomy</u>
Add inclusion term	<u>Mechanical ventilation NOS</u>
Add inclusion term	<u>Non-invasive PPV</u>
Add inclusion term	<u>NPPV</u>

82

Revised Code 93.90

Add inclusion term	<u>That delivered by non-invasive interface:</u>
Add inclusion term	<u>face mask</u>
Add inclusion term	<u>nasal mask</u>
Add inclusion term	<u>nasal pillow</u>
Add inclusion term	<u>oral mouthpiece</u>
Add inclusion term	<u>oronasal mask</u>
Add exclusion term	<u>Excludes: invasive (through endotracheal tube or tracheostomy) continuous mechanical ventilation (96.70 - 96.72)</u>
Add note	<u>Note: Patients admitted on non-invasive mechanical ventilation that subsequently require invasive mechanical ventilation; code both types of mechanical ventilation.</u>



83

Revised Codes 96.70 – 96.72

Revise code title 96.70	Continuous invasive mechanical ventilation of unspecified duration
Revise inclusion term	Invasive M mechanical ventilation NOS
Revise code title 96.71	Continuous invasive mechanical ventilation for less than 96 consecutive hours
Revise code title 96.72	Continuous invasive mechanical ventilation for 96 consecutive hours or more

84

Resource/Reference List

- **Measurement of Intra Sac Pressure in Aneurysm following EVAR, Roddy, Sean P., September 2007**
- **Coding Issues Involving Non-Invasive Ventilation, American College of Chest Physicians, American Thoracic Society, National Association of Medical Direction for Respiratory Care, September 2007**
- **Percutaneous Vertebral Augmentation, Patel, Chetan, September 2007**
- **CMS Updates to ICD-9-CM**
<http://www.cms.hhs.gov/ICD9ProviderDiagnosticCodes/>

85

Resource/Reference List

- **Anulus Fibrosis Diagram: Page created by Don Martin, Elizabeth Taibe, Katie Jablonski. © 2003, Stephen P. Lahr; The text has been adapted from Grant's Dissector 12th edition, 1999 and Moore's Clinically Oriented Anatomy 4th edition, 1999. Maintained by Stephen Lahr. Last updated: 3/27/03**
- **Abdominoperineal Resection Diagram: The Cleveland Clinic © 1995-2008.**

86

Audience Questions



Audio Seminar Discussion



*Following today's live seminar
Available to AHIMA members at
www.AHIMA.org*

*Click on Communities of Practice (CoP) – icon on top right
AHIMA Member ID number and password required – for members only*

Join the **Coding Community**
from your Personal Page under Community Discussions,
choose the *Audio Seminar Forum*

You will be able to:

- Discuss seminar topics
- Network with other AHIMA members
- Enhance your learning experience

AHIMA Audio Seminars

Visit our Web site

<http://campus.AHIMA.org>

for information on the
2008 seminar schedule.

While online, you can also register
for seminars or order CDs and
pre-recorded Webcasts of
past seminars.



Upcoming Seminars/Webinars

FY09 CMS IPPS Update

September 25, 2008

Coding Septicemia, SIRS, and Sepsis

October 2, 2008

Medical Necessity for OP Services

Postponed to October 28, 2008

Thank you for joining us today!

**Remember – sign on to the
AHIMA Audio Seminars Web site
to complete your evaluation form
and receive your CE Certificate online at:**

<http://campus.ahima.org/audio/2008seminars.html>

**Each person seeking CE credit must complete the
sign-in form and evaluation in order to view and
print their CE certificate**

**Certificates will be awarded for
AHIMA Continuing Education Credit**



Appendix

Resource/Reference List	48
CE Certificate Instructions	

Appendix

Resource/Reference List

<http://www.cms.hhs.gov/ICD9ProviderDiagnosticCodes/>



To receive your

CE Certificate

Please go to the AHIMA Web site

<http://campus.ahima.org/audio/2008seminars.html>

click on the link to

"Sign In and Complete Online Evaluation"
listed for this seminar.

You will be automatically linked to the
CE certificate for this seminar after completing
the evaluation.

Each participant expecting to receive continuing education credit must complete the online evaluation and sign-in information after the seminar, in order to view and print the CE certificate.